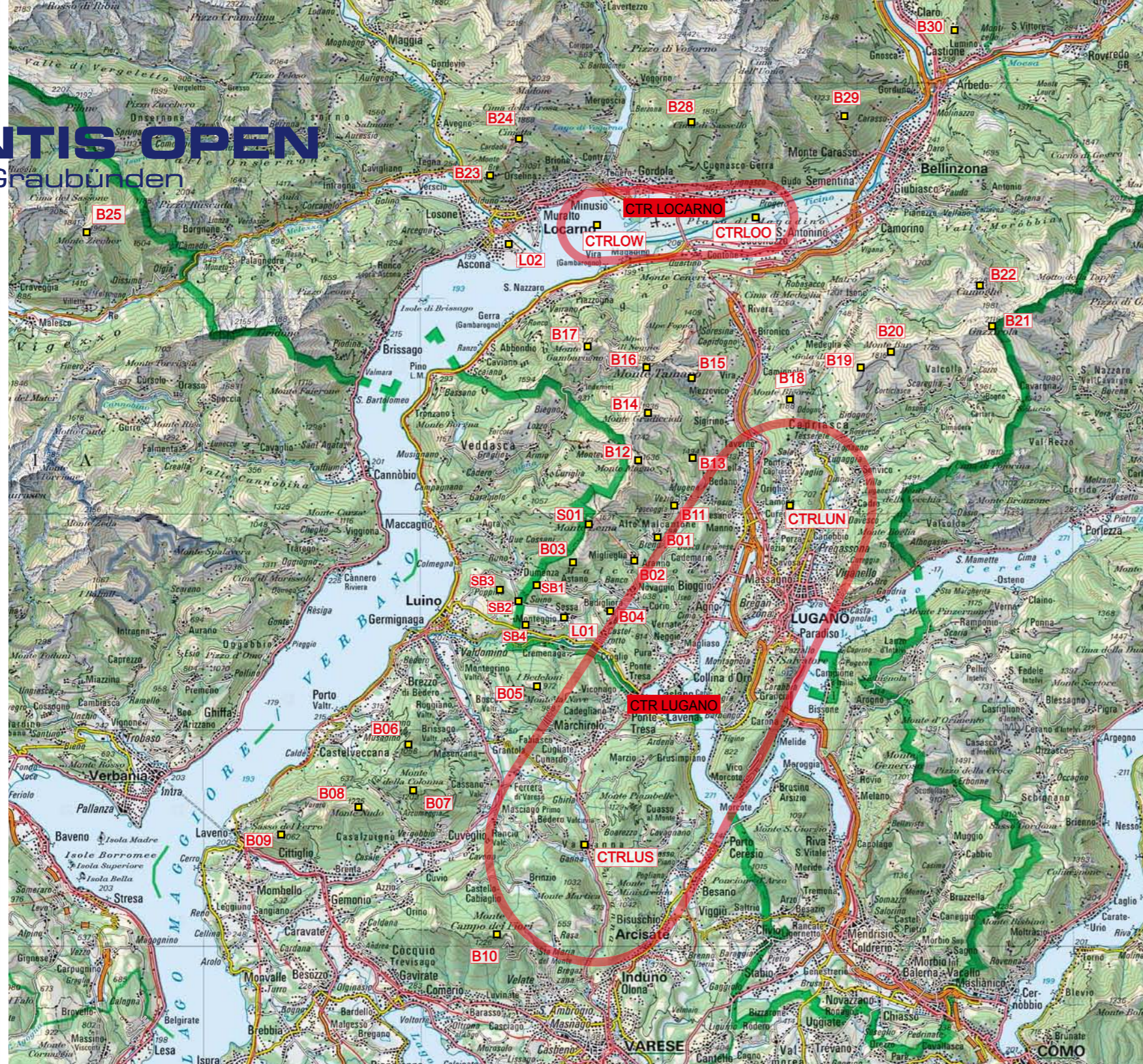


DISENTIS OPEN

Disentis | Graubünden



Take Off	x	y	radius	CTR	radius	CTR
S01162	x = 486945	y = 5098539	1620	DE M LEMA	1800	CTR LOCARNO OST
Landing						
L01039	x = 485772	y = 5094077	390	AT SESSA	1800	CTR LOCARNO WEST
L02020	x = 483510	y = 5111378	200	AT ASCONA	4000	CTR LUGANO NORD CS 2006
L03100	x = 475221	y = 5151349	1000	AT PIOTTA	5000	CTR LUGANO SUD
L04160	x = 514909	y = 5145477	1600	AT SAN BER		
Safety						
SB1074	x = 484124	y = 5095531	740	SB DUMENZA		
SB2040	x = 483558	y = 5094801	400	SB INCROCIO		
SB3067	x = 482707	y = 5095304	670	SB POPPINO		
SB4044	x = 483925	y = 5094011	440	SB TERMINA		
Turn Points						
B01080	x = 490033	y = 5097780	800	BRENO CHIESA		
B02070	x = 488870	y = 5096770	700	MIGLIEGLIA STA		
B03118	x = 486141	y = 5096602	1180	M ROGORIA		
B04062	x = 487787	y = 5094336	620	BEDIGLIORA		
B05097	x = 484268	y = 5090842	970	I BEDELONI RIS		
B06106	x = 478302	y = 5088278	1060	M PIAN NAVE		
B07120	x = 478470	y = 5086198	1200	M DELLA COLO		
B08123	x = 475916	y = 5085471	1230	M NUDO		
B09106	x = 472338	y = 5084263	1060	SASSO D FERRO		
B10123	x = 482205	y = 5079420	1230	M CAMPO FIORI		
B11080	x = 491058	y = 5099317	800	VEZIO CHIESA		
B12164	x = 489236	y = 5101194	1640	M MAGNO		
B13149	x = 491647	y = 5101294	1490	M FERRARO		
B14193	x = 489621	y = 5103443	1930	M GRADICCIOLI		
B15165	x = 491751	y = 5105079	1650	CAMUSIO ANT		
B16196	x = 489649	y = 5105610	1960	M TAMARO		
B17173	x = 486901	y = 5106539	1730	M GAMBAROGN		
B18119	x = 496163	y = 5103869	1190	M BIGORIO		
B19163	x = 499482	y = 5105386	1630	CAVAL DROSSA		
B20182	x = 500930	y = 5106029	1820	M BAR ANT		
B21211	x = 505598	y = 5107161	2110	GAZZIROLA		
B22223	x = 504733	y = 5108869	2230	CAMOGHE		
B23102	x = 482489	y = 5114642	1020	MONTE BRE		
B24167	x = 483895	y = 5116376	1670	CIMETTA		
B25197	x = 464135	y = 5112285	1970	M ZICCHER		
B26175	x = 460064	y = 5112251	1750	LA CIMA ST TEL		
B27188	x = 471824	y = 5129442	1880	CIMA CASTELLO		
B28177	x = 491972	y = 5116715	1770	SAS CROCE		
B29135	x = 498908	y = 5116982	1350	MORNERA DEC		
B30125	x = 504139	y = 5120889	1250	PARUSCIANA DE		
B31190	x = 504847	y = 5123223	1900	BROGOLDONE C		
B32217	x = 494215	y = 5139578	2170	MATRO ANT		
B33142	x = 499778	y = 5141096	1420	DAGRO FUNIVIA		
B34178	x = 515436	y = 5145552	1780	S BERNAD SKI		
B35284	x = 499408	y = 5146375	2840	CIMA DI GANA B		
B36195	x = 486009	y = 5149955	1950	CARI RISTORA		
B37139	x = 475610	y = 5152329	1390	ALTANCA		
B38185	x = 475195	y = 5153469	1850	RITOM DIGA		



Report back (latest 15 minutes after landing)

Send an SMS with the text „para stop“ (without quotes) to the phone number +41 79 381 60 10.

You can add additional information after „para stop“ to the message. For example you could send „para stop Landed in Ilanz“.

You will get an automatic confirmation message after we received your message. Please send the SMS also if you decided not to fly.

If you have problems with your mobile phone (e.g. empty battery), pls. phone to the organisation.

Contacts

Safety (Headquarter): +41 79 784 82 26
 Franco Tomschett +41 79 629 78 35
 Martin Scheel +41 79 44 55 163

Scoring

Toni Crottet +41 79 446 01 90

Radio Frequency

157 400

Emergencies

International Emergency Number 112
 Ambulance / Rescue Helicopter 112
 REGA (2nd Rescue Helicopter possibility) 1414
 Police 117

In Emergencies

Secure scene of incident
 Alarm help
 First aid
 Who? What happens? Where? Special dangers?
 Airway - Breathing - Circulation

